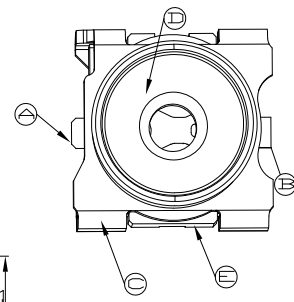
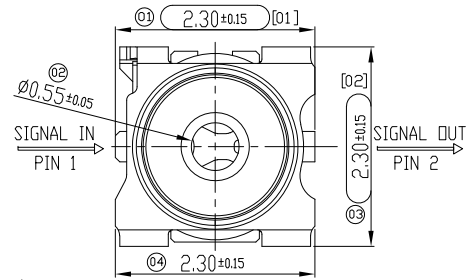
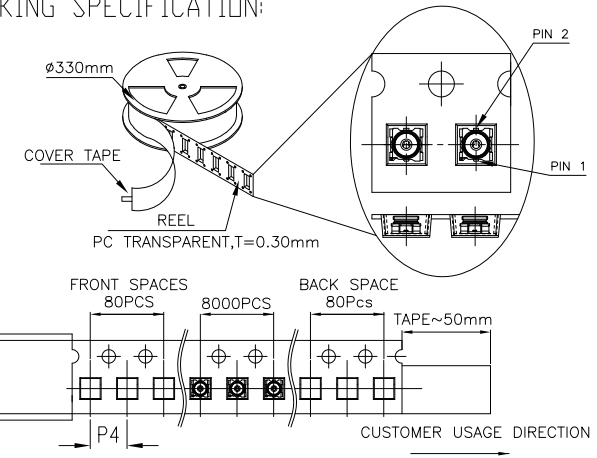


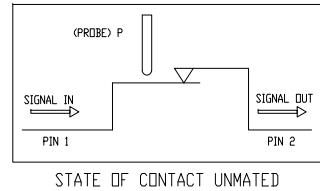
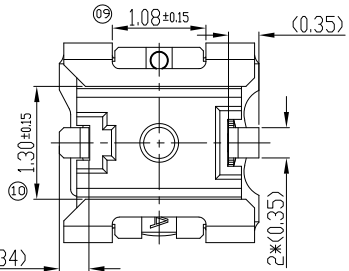
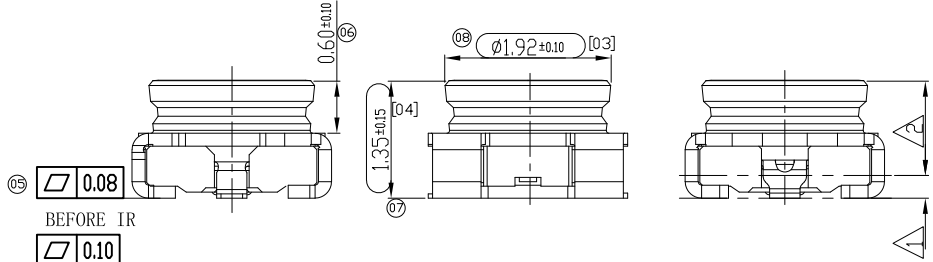
文档密级:
商业秘密

REV.	ECN NUMBER	DESCRIPTION	DATE	DRAWN	CHECKD	APPROVED
X1	ECN241383	FIRST RELEASE	09/26'24	WANG	HU	LV

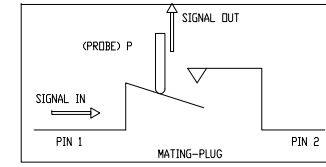
PACKING SPECIFICATION:



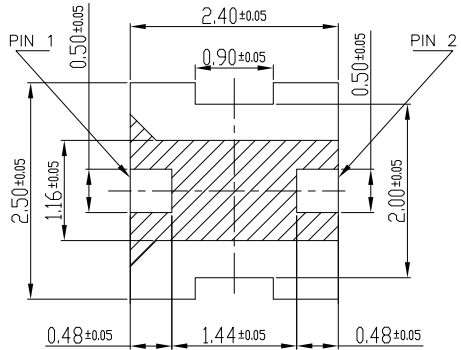
3D Model



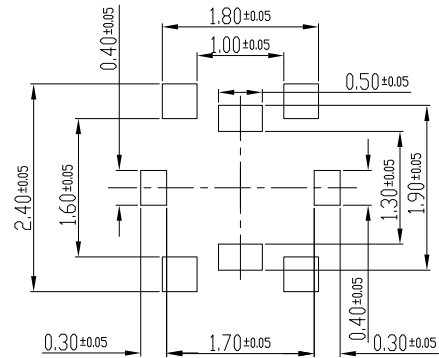
STATE OF CONTACT UNMATED



STATE OF CONTACT MATED



RECOMMENDED PCB LAYOUT
TOLERANCE ±0.05MM



RECOMMEND METAL MASK
(THICKNESS:0.10MM)

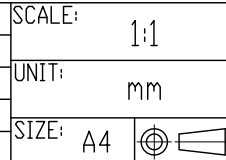
NOTES:

- 1.1 Rated Voltage 60V AC max.
- 1.2 FREQUENCY RANGE DC~11GHZ
- 1.3 IMPEDANCE 50Ω
- 1.4 POWER RATING 2W
- 1.5 OPERATING TEMPERATURE -40℃~+85℃
- 1.6 INSULATION RESISTANCE 500MΩ MIN.
- 1.7 WITHSTANDING VOLTAGE 200V AC & 1MINUTE
- 1.8 INITIAL CONTACT RESISTANCE 120MΩ MAX.
(WITHOUT CONDUCTOR RESISTANCE)
- 2.1 VOLTAGE STANDING WAVE RATIO(VSWR) 1.2 MAX. (DC~3GHZ)
1.3 MAX. (3~6GHZ)
1.5 MAX. (6~11GHZ)
- 2.2 INSERTION LOSS 0.15DBMAX. (DC~3GHZ)
0.20DBMAX. (3~6GHZ)
0.40DBMAX. (6~11GHZ)
- 2.3 ISOLATION 20 DBMIN. (DC~3GHZ)
15 DBMIN. (3~6GHZ)
12 DBMIN. (6~11GHZ)
- 2.4 DURABILITY 100 CYCLES
- 3.1 PACKING TAPE & REEL 8000PCS/REEL (Φ330MM)
- 3.2 IR REFLOW CYCLE: 2CYCLES

Ⓔ	DOWN HOUSING	1	LCP UL94V-0/BLACK
Ⓓ	TOP HOUSING	1	LCP UL94V-0/BLACK
Ⓒ	SHELL	1	COPPER ALLOY/ NI:50U" MIN COPPER ALLOY/AU:1U" MIN; NI:50U" MIN
Ⓑ	PIN 2	1	STEELAU:5U" MIN; NI:50U" MIN
Ⓐ	PIN 1	1	STAINLESS STEEL/AU:5U" MIN; NI:50U" MIN
ITEM	DESCRIPTION	Q'TY	MATERIAL/FINISH
BOM LIST			



GENERAL TOLERANCE		SCALE:
XX. ±0.50		1:1
X. ±0.35	X° ±2.0°	UNIT:
.X ±0.25	.X° ±1.0°	mm
.XX ±0.15	.XX° ±0.5°	SIZE: A4



DRAWN	WANG	DATE	09/26'24
CHECK		DATE	
APPROVE		DATE	

DWG. NO.	600-10055-01
PARTS NO.(INTENDED USE)	818010055

TITLE	CUSTOMER DRAWING
	MINI RF II CONN.,
	L2.30*W2.30*H1.35mm

REV.	X1
SHEET	1/1